



## Installing Diskeeper® HomeServer on Windows® Home Server Systems

This installation guide covers the following information:

1. Which Edition of Windows Home Server do I have?
2. Installing Diskeeper HomeServer on Windows Home Server 2011 Systems
  - a. Uninstalling Diskeeper HomeServer on Windows Home Server 2011 Systems
3. Installing Diskeeper HomeServer on Windows Home Server
  - a. Uninstalling Diskeeper HomeServer on Windows Home Server Systems

The Microsoft® Windows Home Server (WHS) operating system is primarily intended to run on a “headless system”, meaning it typically has no keyboard or monitor.

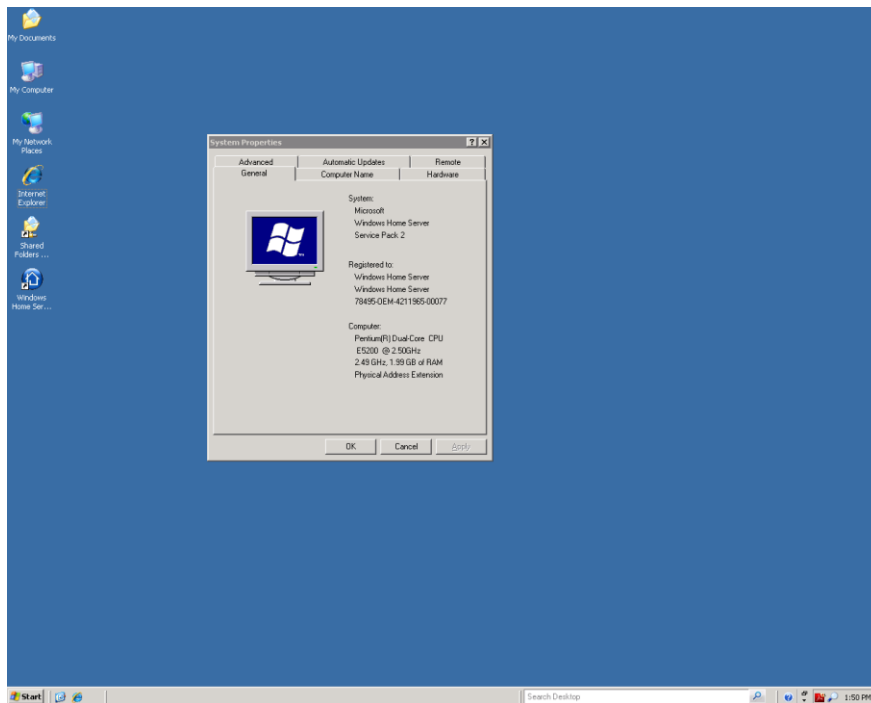
These instructions assume that you are familiar with connecting remotely to your Windows Home Server system.

### Which Edition of Windows Home Server do I have?

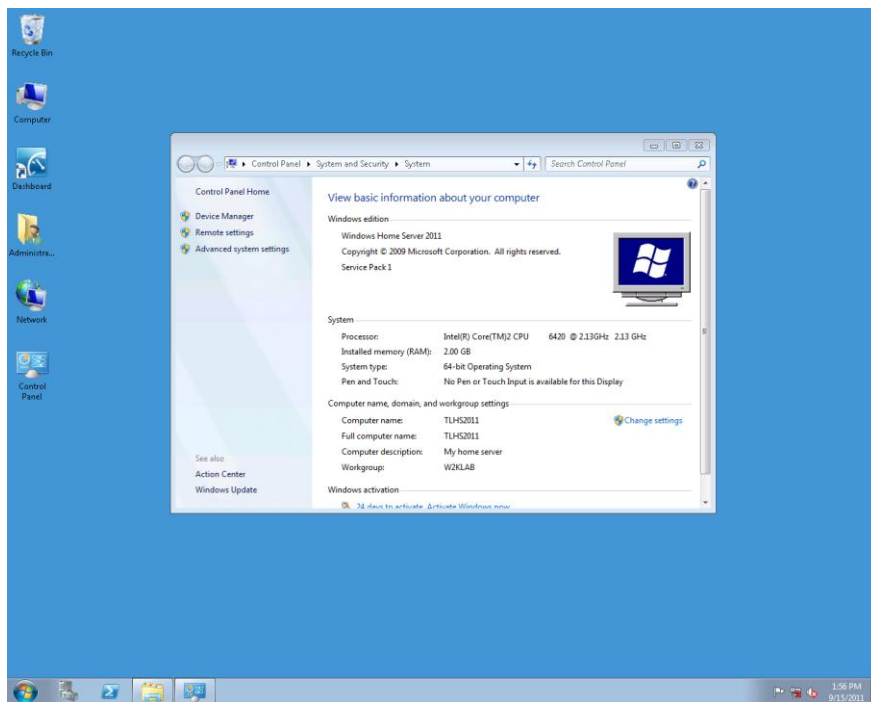
If you don't know which edition of Windows Home Server you have, remote connect to your Windows Home Server, right-click on My Computer and then select Properties.

The information on the General Tab will identify which edition of Windows Home Server is installed (either Windows Home Server or Windows Home Server 2011). The installation process is different depending on which edition you are using.

On Windows Home Server it looks like this:



On Windows Home Server 2011 it looks like this:



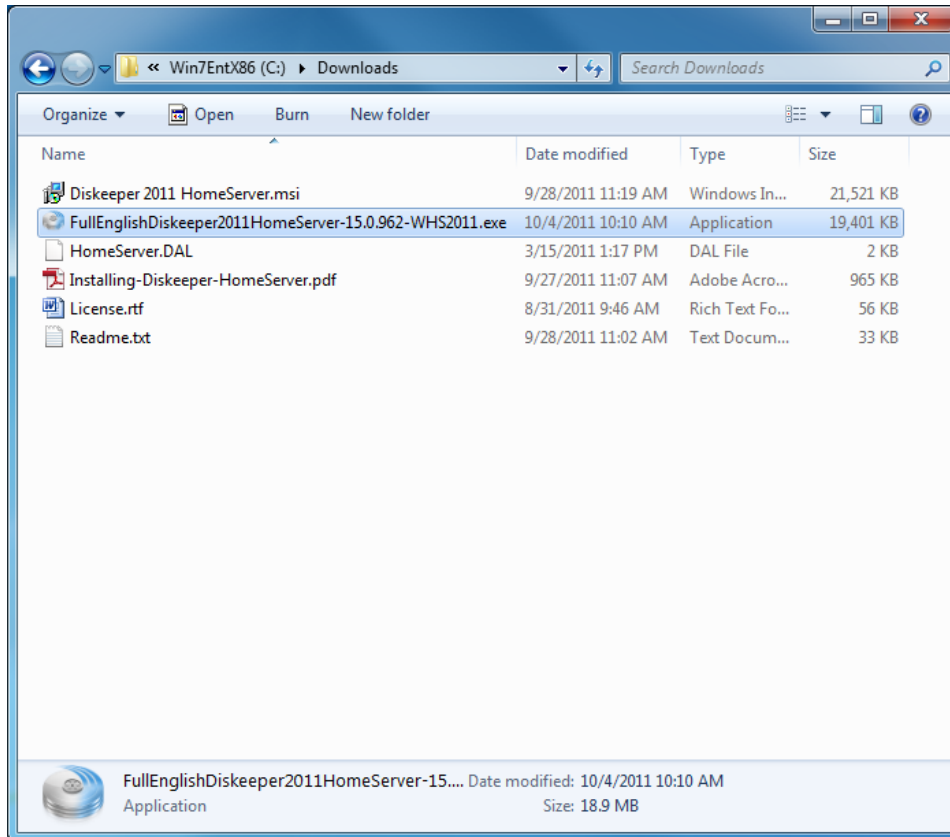
After identifying which edition you are using, click on the appropriate link below to jump to installation instructions that pertain to your edition of Windows Home Server:

[Installing Diskeeper HomeServer on Windows Home Server 2011](#)

[Installing Diskeeper HomeServer on Windows Home Server](#)

## Installing Diskeeper HomeServer on: Windows Home Server 2011 Systems

1. Start by double-clicking the Diskeeper HomeServer Installation file you downloaded to extract the program files. After the extraction is complete, you will see several files in the extraction location. The files will look something like this:



2. Connect to your Windows Home Server 2011 system and copy the Diskeeper 2011 HomeServer.msi installation file and HomeServer.DAL file onto the system. If you are installing a trialware version of Diskeeper, copy the Diskeeper HomeServer.msi installation file, HomeServer.DAL file and if present, also copy the RID.txt file.
3. Double-click on the Diskeeper 2011 HomeServer.msi file on your Windows Home Server 2011 system and follow the instructions provided in the installation wizard to finish installing Diskeeper 2011 HomeServer.

## Uninstalling Diskeeper HomeServer on: Windows Home Server 2011 Systems

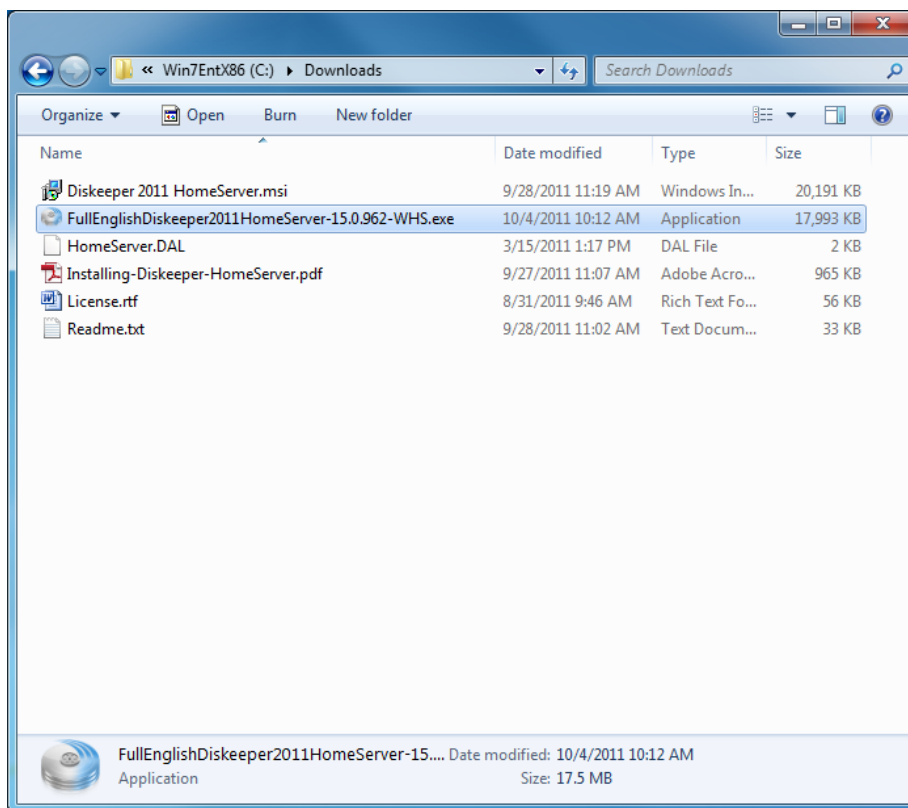
There are no special instructions to uninstall Diskeeper2011 HomeServer from your Windows Home Server 2011 system. Go to the Programs and Features section of the control panel, right-click on Diskeeper2011 HomeServer in the list and choose **Uninstall**.

## Installing Diskeeper HomeServer on: Windows Home Server

The process of installing Diskeeper HomeServer on your Windows Home Server system is a two part process involving two add-ins (the Diskeeper HomeServer and the Diskeeper HomeServer Console.)

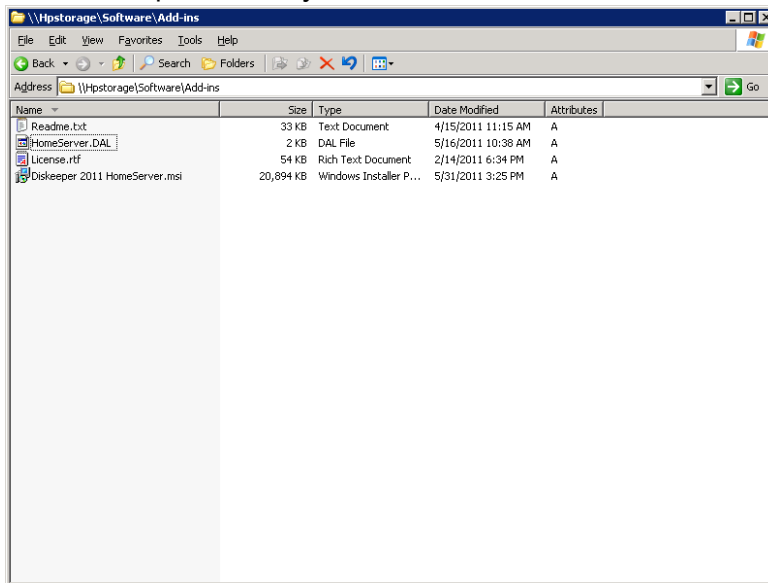
Follow these steps to install Diskeeper HomeServer on your Windows Home Server system and add it to the Windows Home Server Console:

1. Start by double-clicking the Diskeeper HomeServer Installation file you downloaded to extract the program files. After the extraction is complete, you will see several files in the extraction location. The folder will look something like this:



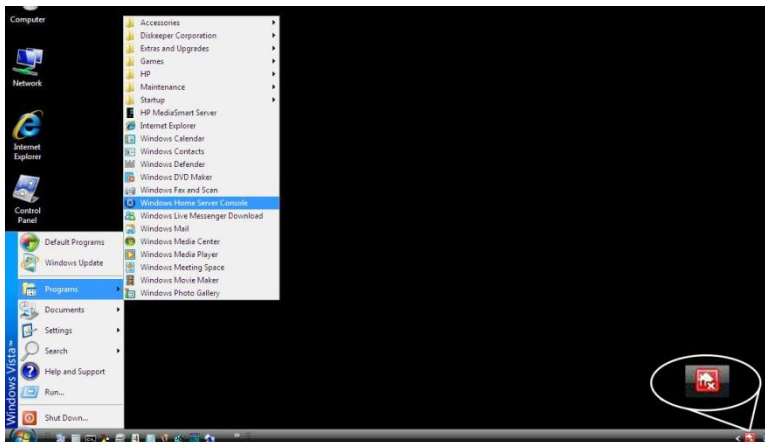
2. Connect to your HomeServer system and upload the Diskeeper 2011 HomeServer.msi installation file and HomeServer.DAL file into your Software\Add-ins folder. If you are installing a trialware version of Diskeeper, upload the Diskeeper HomeServer.msi installation file, HomeServer.DAL file and if present, also upload the RID.txt file.

The Diskeeper files in your Add-ins folder will look something like this:

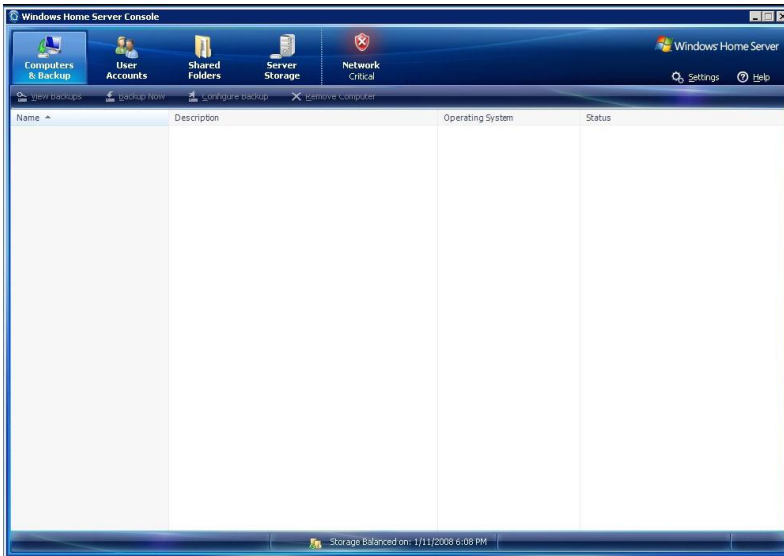


After uploading the files, connect to your Windows Home Server Console. Follow these steps to install Diskeeper HomeServer:

1. Open the Windows Home Server Console by double-clicking the Windows Home Server Console shortcut on your local machine system tray. You can also launch Windows Home Server Console from the Start menu.



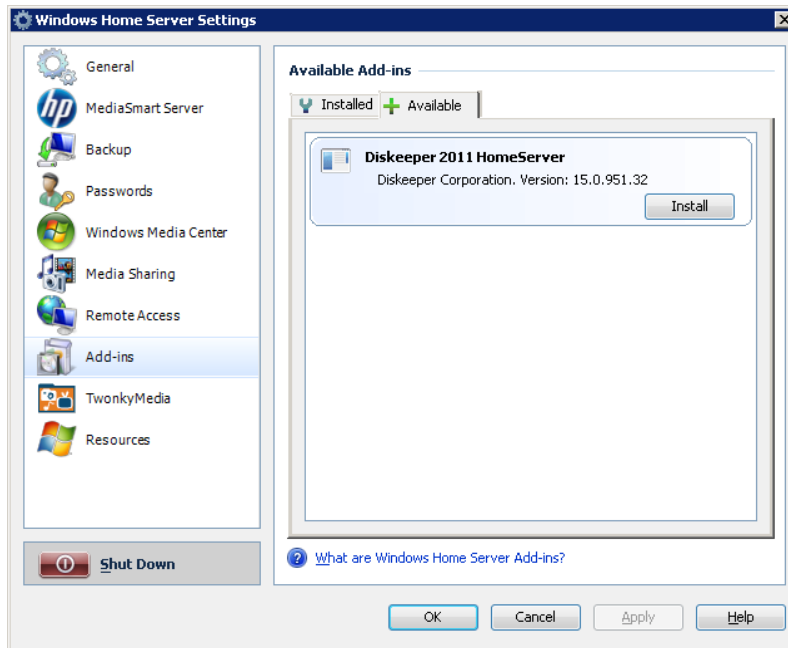
This will open the Windows Home Server Console.



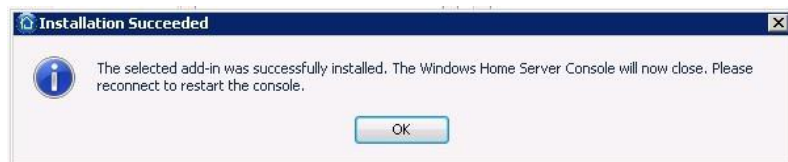
2. Click **Settings** to open the Windows Home Server Settings Console.



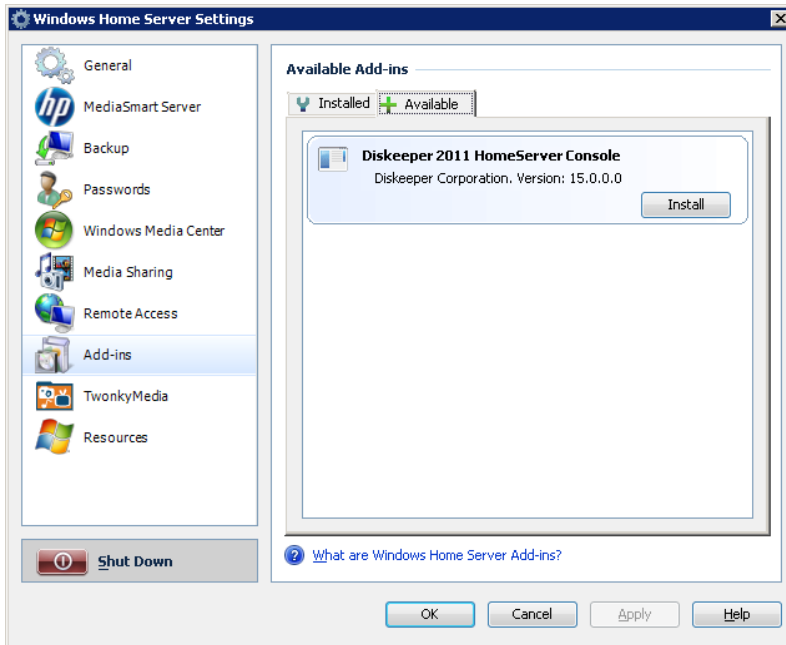
3. Click **Add-ins** in the task pane on the left side of the Windows Home Server Settings Console, and then click the **Available** tab in the Available Add-ins area. You will see Diskeeper HomeServer listed as an available Add-in.



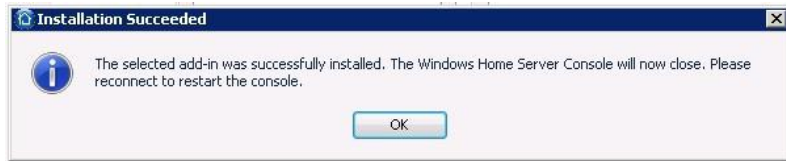
4. Click **Install** to install the Diskeeper HomeServer Add-in. After the installation is complete, the Windows Home Server Console should close automatically. If it does not close automatically, it is necessary that you close the Windows Home Server Console.



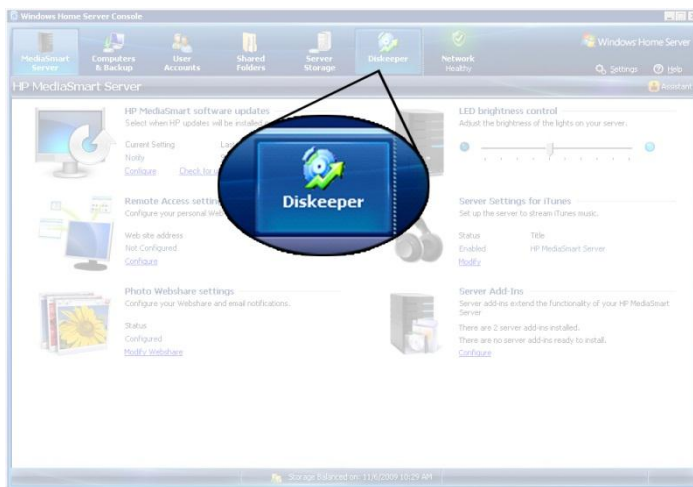
5. Restart the Windows Home Server Console; click **Add-ins** in the task pane on the left side of the Windows Home Server Settings Console, then click the **Available** tab in the Available Add-ins area. You will see the Diskeeper HomeServer Console listed as an available Add-in.



6. Click **Install** to install the Diskeeper HomeServer Console Add-in. After the installation is complete, the Windows Home Server Console should close automatically. If it does not close automatically, it is necessary that you close the Windows Home Server Console.



7. When you restart the Windows Home Server Console, you will see a new toolbar icon for Diskeeper. Click this icon to open Diskeeper HomeServer within the console.



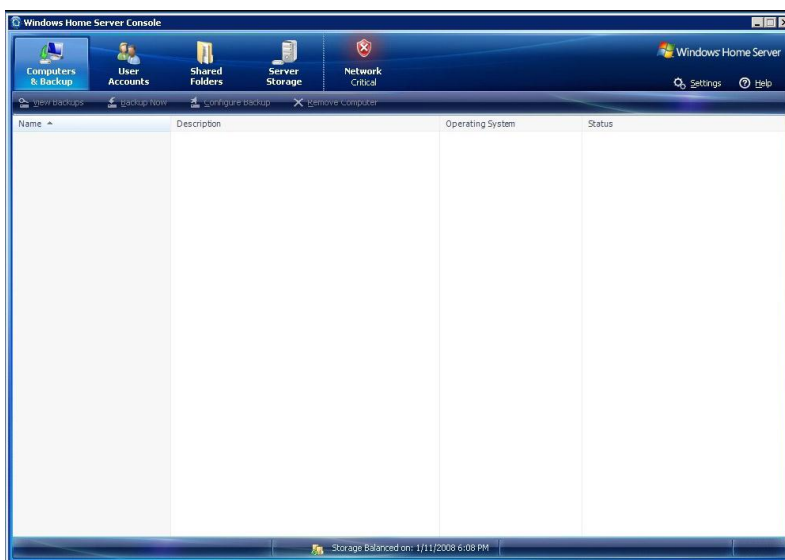


After opening Diskeeper, you can change any of the settings via the toolbar buttons and the Quick Launch task pane as described in the Diskeeper documentation. Of course if you enabled Automatic Defragmentation during the installation, there is no need to make any changes. Your file fragmentation will be handled automatically and invisibly by Diskeeper using the InvisiTasking® advanced background processing technology.

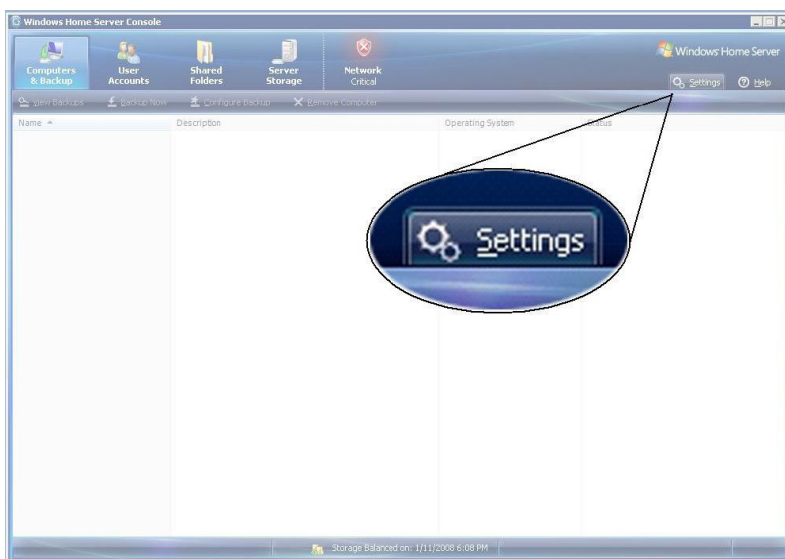
## Uninstalling Diskeeper HomeServer on Windows® Home Server Systems

1. Open the Windows Home Server Console by double-clicking the appropriate shortcut on your local machine system tray.

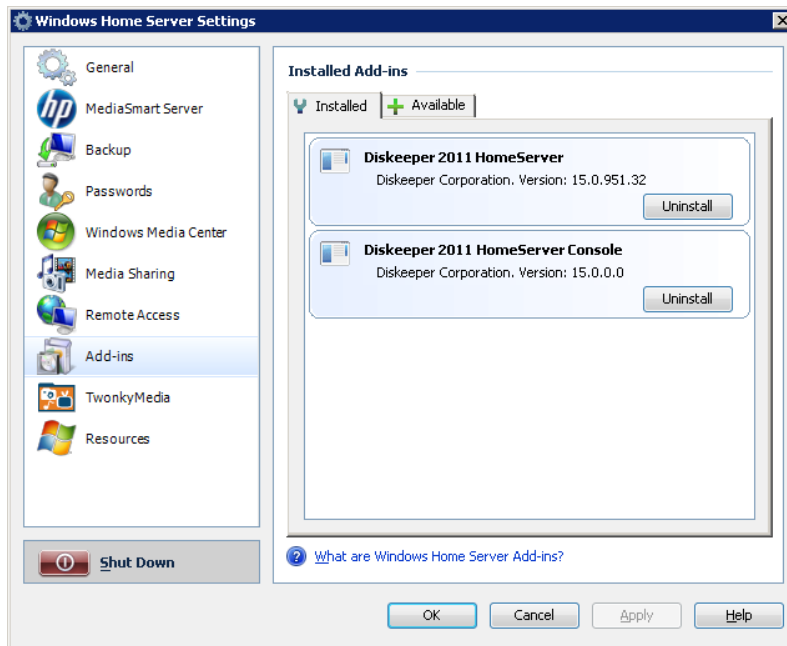
This will open the Windows Home Server Console.



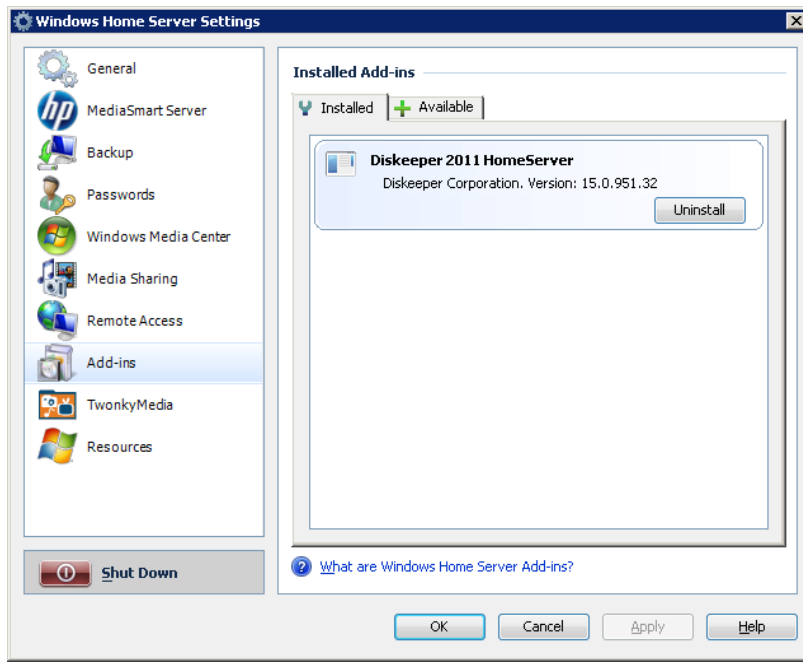
2. Click **Settings** to open the Windows Home Server Settings Console.



3. Click **Add-ins** in the task pane on the left side of the Windows Home Server Settings Console, and then click the Installed tab in the Available Add-ins area. You will see the Diskeeper HomeServer and Diskeeper HomeServer Console listed as installed Add-ins.



4. Click **Uninstall** to uninstall the Diskeeper HomeServer Console Add-in first. After the Diskeeper HomeServer Console is uninstalled, it is then necessary to close the Windows Home Server Console.
5. When you restart the Windows Home Server Console, click **Add-ins** in the task pane on the left side of the Windows Home Server Settings Console, then click the Installed tab in the Available Add-ins area. You will see the Diskeeper HomeServer listed as an installed Add-in.



6. Click **Uninstall** to uninstall the Diskeeper HomeServer Add-in. After the Diskeeper HomeServer Add-in is uninstalled, it is then necessary to close the Windows Home Server Console.

© 2012 Conduvis Technologies Corporation. All Rights Reserved.

Diskeeper and InvisiTasking are either registered trademarks or trademarks of Conduvis Technologies Corporation in the United States and other countries.

Microsoft, Windows, Windows Vista, Windows Home Server and Windows Home Server 2011 are either registered trademarks or trademarks owned by Microsoft Corporation in the United States and/or other countries. All other trademarks are the property of their respective owners.