



Installing Undelete on Your Network

Undelete® can be installed in a variety of ways. If you are installing Undelete onto a single computer, no special actions are needed. Simply double-click the Undelete installation file you downloaded on the target computer and complete the installation wizard steps.

If you are installing the software onto multiple computers in a network you have several options. Note: Undelete requires that you have .Net 4.0 Client or Full edition installed on the target machine in order to run. If you do not already have .Net 4.0 installed on the target machine, it will automatically download and install when you start the Undelete installation.

Option 1 – Using the Undelete PushInstall Wizard.

Select 'Start Menu → ConduSiv Technologies → Undelete 10 PushInstall' for the Undelete PushInstall Wizard. Follow the steps to install Undelete Desktop Client, Professional Edition or Server Edition on other systems in your network workgroup or NT domain.



Follow the steps to remotely install Undelete in your workgroup or NT domain.

Note: It may not list all the systems in your Active Directory. In this case, you may want to look at the other options.

Option 2 – Using a network software distribution program to perform a silent installation using a command line.

Most software distribution programs rely on access to a Setup.exe file. Follow these steps to extract the Setup.exe file necessary for installation with this type of tool:

1. Begin by double-clicking the *LanguageVersionProductEditionNameVersionNumber.exe* file that you downloaded (this is a self-extracting file). This will extract the Undelete software into the folder

\Program Files (x86)\Undelete Setup Files\AutoPlay\Undelete*Edition*

2. Subfolders will also be created under this folder and labeled ... \X86 (for Undelete running on Windows® 32-bit operating systems) and ... \X64 (for Undelete that natively support Windows 64-bit operating systems). When the extraction process is complete, you will see something similar to this:



The files have now been extracted, so select the close button.

3. After canceling the installation, you will find a Setup.exe file in the respective X86 or X64 folders as appropriate for your installation. Use this Setup.exe file, along with any installation parameters needed, with your software distribution tool. For example:

Setup.exe /s /v" /qn" (silent install)

Option 3 – Creating an Administrative Install (e.g. for Active Directory® deployment).

Another installation option is to create an “administrative install”¹ using a .msi (Microsoft® Installer) server image for installation. Follow these steps to create the Undelete .msi package for administrative installations:

1. Begin by double-clicking the *LanguageVersionProductEditionNameVersionNumber.exe* file that you downloaded (this is a self-extracting file). This will extract the Undelete software into the folder

\Program Files (x86)\Undelete Setup Files\AutoPlay\UndeleteEdition

2. Subfolders will also be created under this folder and labeled X86 (for Undelete running on Windows® 32-bit operating systems) and X64 (for Undelete that natively support Windows 64-bit operating systems). When the extraction process is complete, you will see something similar to this:



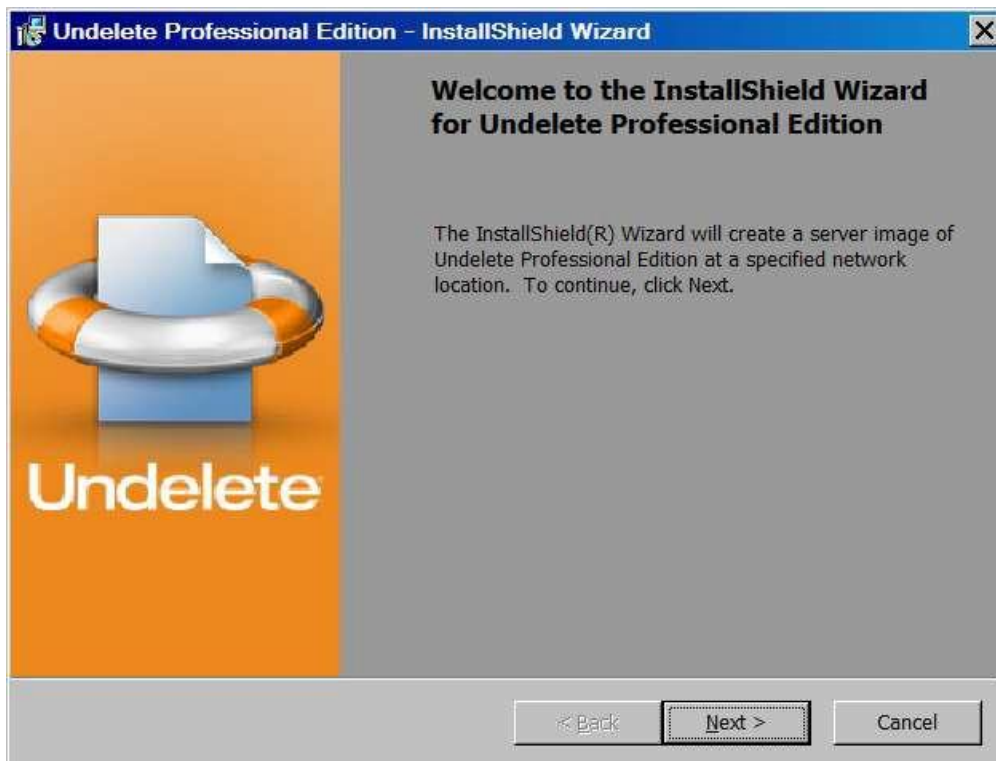
The files have now been extracted, so select the close button.

¹ For Active Directory, one method of ‘Administrative install’ is using group policy – See <http://support.microsoft.com/kb/816102#method1>

3. After canceling the installation, you will find a Setup.exe file in the respective X86 or X64 folders as appropriate for your installation. Use this file to create the Undelete VersionNameProductEditionName.msi file used for administrative installations by issuing this command at the Windows command prompt. Note: You must issue this command from the directory where the Setup.exe file resides, or include the path to the file in the command:

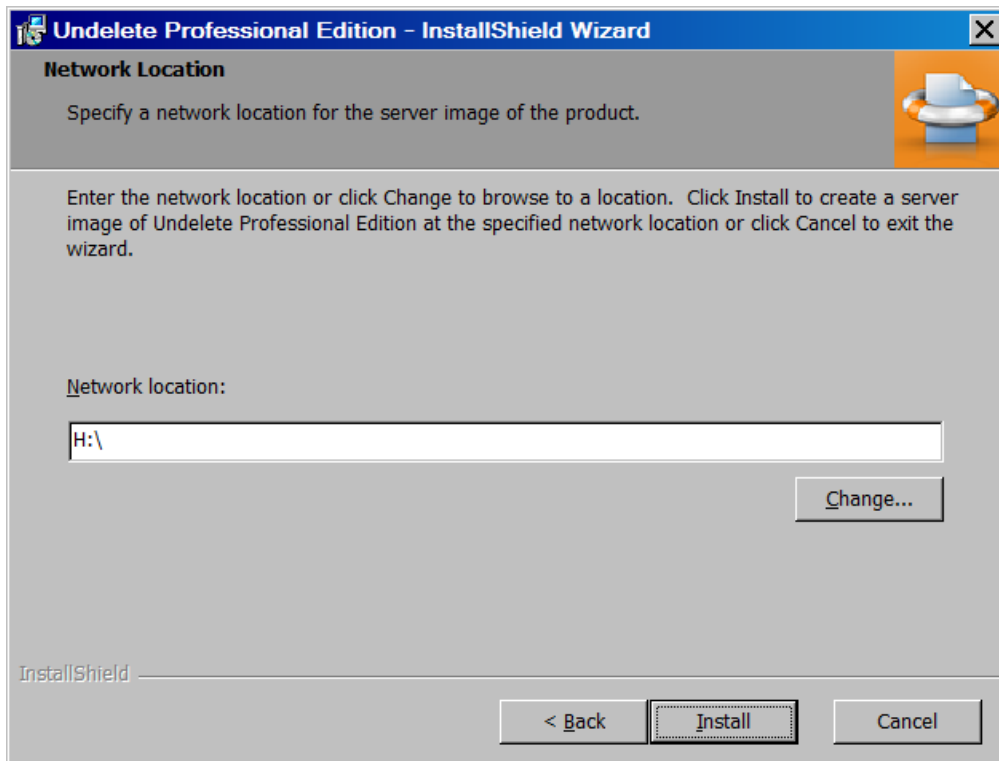
```
setup.exe /a
```

4. This command starts the creation of a server image of the Undelete installation. Click Next when the installation Welcome screen is displayed:



5. In the next window, click Change to specify the folder where you want the server image to be saved, and then click Install.

Note: The location you specify must be on a network share accessible to the computers on which you are installing Undelete.



6. The final window confirms the operation is complete. Click Finish to close the window.



7. After the server image has been created, the 'Undelete ProductEditionName.msi' file necessary for administrative installations will be in the location you specified in the earlier step.

8. Use any software installation routine to launch the .msi file as you normally would. Add the parameters of your choice. For example:

Undelete ProductEditionName.msi /qn (silent install)